

Product Data Sheet

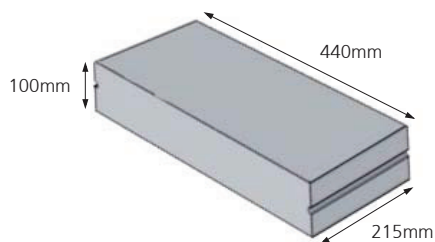
TOPCRETE RD

TARMAC TOPBLOCK - TOPCRETE RD

Introduction

Topcrete RD blocks have been developed for the construction of solid separating walls in dwellings conforming to Robust Detail E-WM-9. They satisfy the requirements specified in the Robust Detail and therefore comply with Part E1 to the Building Regulations.

Topcrete RD blocks include grooves in each end so that it is possible to check the constructed wall to ensure that the correct block has been used; a requirement of this particular Robust Detail. The wall should be finished with plasterboard (12.5kg/m²) on 13mm render with a scratch finish.



Authority

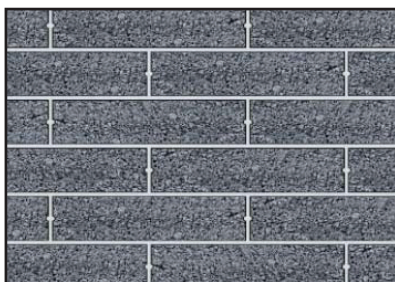
Topcrete RD blocks conform to BS EN 771-3 and are manufactured under a Quality System complying with BS EN ISO 9001.

Size

The dimensions of Topcrete RD are 440mm x 215mm x 100mm. They should be used laid flat to construct a 215mm width wall.

Appearance

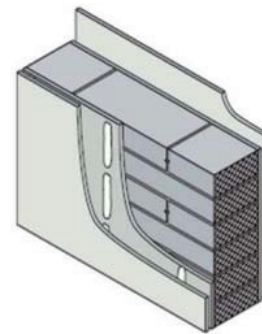
Topcrete RD blocks are standard grade blocks with a textured surface suitable for applied finishes. Grooves in the end of the blocks aid site identification.



Appearance of Topcrete RD separating wall as built.

Application

Topcrete RD blocks are suitable for the construction of 215mm width solid separating walls in houses taken from raft foundations, conforming to Robust Detail E-WM-9. They may also be suitable for use in other solid separating wall conditions, but will be subject to pre-completion testing in accordance with Approved Document E.



Material Properties

| | |
|--|---------------------------------|
| Mean compressive strength to EN 771-3 | 7.3N/mm ² |
| Material dry density | 1,900 to 2,000kg/m ³ |
| Typical block weight (3% moisture content) | 18.5kg |
| Laid weight (including mortar) | 416kg/m ² |

Design

The design of loadbearing walls should be in accordance with Approved Document A of the Building Regulations.

When required the characteristic compressive strength of Topcrete RD (blocks laid flat) can be obtained from Table 2 (h) of BS 5628-1.

Installation

Blockwork should be constructed strictly in accordance with the requirements of Robust Detail E-WM-9 published by Robust Details Limited. A checklist is provided to aid correct installation. Further information on good site practice may be found in the Topblock Sitework Guide.

Specification

To be described as:

'Topcrete RD dense blocks to EN 771-3, 440mm long x 215mm width x 100mm height, with a mean compressive strength of 7.3N/mm² obtainable from Tarmac Topblock Ltd.

The product is to be used in solid separating walls of 215mm width'.

Quantities

The product is sold as a 215mm block on a square metre basis (m²). There are 20 blocks supplied per m² of wall.

Topblock supply blocks nationally. To make contact with our sales organisation could not be easier!

National Sales Helpline

Call us on: 0845 606 2468

Technical Helpline

Call us on: 0870 242 1489

E-mail: technical.services@tarmac.co.uk

The product brochures available include:

Durox - aircrete blocks

Durox System - thin joint blocks

Toplite - aircrete blocks

Hemelite & Topcrete - lightweight & dense aggregate blocks

Tarmac Topblock Limited

Millfields Road

Ettingshall

Wolverhampton

West Midlands WV4 6JP

Website: www.topblock.co.uk

Literature requests:

Call us on 08456 044 114

E-mail: marketing@tarmac.co.uk

Further Information:

Please call the Technical Centre on: 0870 242 1489.

Tarmac and the 'T' mark are registered trademarks of the Tarmac Group.

While the information contained in this publication has been prepared in good faith no representation or warranty, express or implied, is made and no responsibility or liability is accepted in relation to the accuracy or completeness of this publication and any opinions expressed in this publication, and any such liability is excluded except to the extent that such liability may not be so excluded or limited by law.
1021 / 0308 November 2008

Tarmac  [®]